

Powerful and Energy Efficient Infrared Heater

primoSchwank



Now also with
modulating operation



Schwank
INNOVATIVE HEATING SOLUTIONS

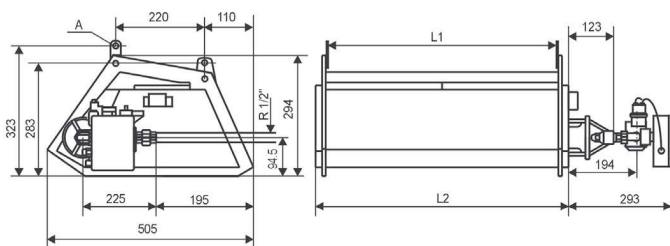


Infrared Heater – primoSchwank

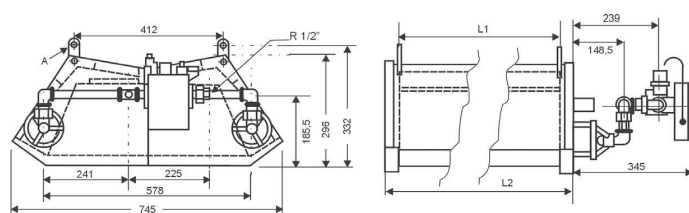
- Radiant factor of up to 69.5%*
- Available as single stage, 2-stage or fully modulating versions
- Patented delta mixing chamber
- Combined high- and low-intensity radiation for high radiant factor
- Schwank ceramic „honeycomb effect“ tiles [ceraSchwank]
- Uniform and comfortable heat distribution
- Short warm-up times
- Quality, long-life cycle and high comfort
- No dust swirls or draughts
- Quick and easy assembly
- Quality „Made in Germany“

* Radiant factor of a primoSchwank 30 measured by DVGW laboratory according to DIN EN 419-2

primoSchwank 10 / 15 / 20 /30



primoSchwank 40



		primoSchwank 10	primoSchwank 15	primoSchwank 20	primoSchwank 30	primoSchwank 40
Gas input* [kW]	Nat. gas H / L	9,7	14,5	19,4	29,1	38,8
	Propane	9,7	14,5	19,4	29,1	38,8
Gas consumption in m ³ /h **	Nat. gas H / L	0,97 / 1,13 m ³ /h	1,45 / 1,69 m ³ /h	1,95 / 2,26 m ³ /h	2,92 / 3,40 m ³ /h	3,90 / 4,53 m ³ /h
	Propane	0,76 kg/h	1,13 kg/h	1,52 kg/h	2,28 kg/h	3,01 kg/h
Weight [kg]	Appliance	10,0	14,0	17,5	23,0	30,1
	Control	1,4	1,4	1,4	1,4	2,3
Dimensions [mm]	Length L2	605	882	1160	1714	1160
	Length L1	553	830	1108	1662	1108
CE-Identifikation	CE-0085AU0374					

* The nominal heat load is the heat quantity supplied by the gas based on its thermal value $H_{i,n}$

** Gas consumption: Nat. gas H: $H_{i,n} = 9,97 \text{ kWh/m}^3$ Nat. gas L: $H_{i,n} = 8,57 \text{ kWh/m}^3$ Propane: $H_{i,n} = 12,87 \text{ kWh/kg}$ [bei 0°C / 1013 mbar]

** 1-stage natural gas H / L 35,0 kW

Applications

High efficiency heater for industrial buildings, warehouses or outdoor heating.

Min. connection pressure

	1-stage	2-stage	modulating
Nat. gas H:	20 mbar	30 mbar	45 mbar
Nat. gas L:	22 mbar	24 mbar	45 mbar
Propane:	50 mbar	65 mbar	65 mbar
Butane:	50 mbar	65 mbar	65 mbar

Max. connection pressure

Nat. gas/ Propane: 100 mbar

Electrical supply

Single-phase AC
 · 230 V, N, PE
 · 50 Hz [approx. 45 VA]

Exhaust flue indirect

according to DIN EN 3410 or DVGW G 638-1 or ÖVGW G 3/3

Gas connection

Threaded fitting R 1/2" [male]

Fixture

The heater to be mounted on 4 points [A] with steel cables or the like on the ceiling or wall brackets attached to the wall.

United Kingdom

Schwank Ltd
 Suite 21, 50 Churchill
 Square Business Centre,
 Kings Hill, West Malling,
 Kent ME19 4YU
 Tel.: +44 (0) 208 641 3900
 Fax: +44 (0) 208 641 2594
 E-mail: sales@schwank.co.uk
 Internet: www.schwank.co.uk

Ireland

Eurogas Ltd
 Unit 38B, Southern Cross
 Bus Pk, Boghall Road
 Bray, Co Wicklow
 Tel.: +353 1 286 8244
 Fax: +353 1 286 1729
 E-mail: info@eurogas.ie
 Internet: www.eurogas.ie

Australia

Devex Systems Pty Limited
 5/83 Bassett St
 Mona Vale NSW 2103
 Tel.: +61 02 9997 2811
 Fax: +61 02 9997 7852
 E-mail: info@devexsystems.com.au
 Internet: www.devexsystems.com.au

New Zealand

Energy Products Int.
 30 Gallagher Drive,
 Frankton, Hamilton
 Tel.: +64 7 839 2705
 Fax: +64 7 834 4212
 E-mail: sales@energy-products.co.nz
 Internet: www.energy-products.co.nz

