

# Powerful and Energy Efficient Infrared Luminous Heater

**primoSchwank**



Now also with  
modulating operation



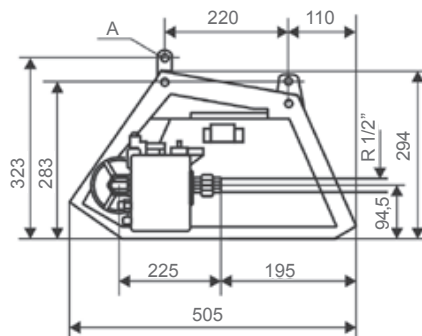
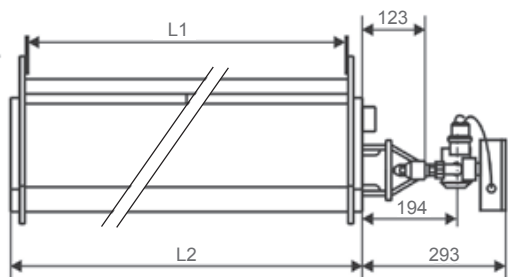
**Schwank**  
INNOVATIVE HEATING SOLUTIONS



# Infrared Luminous Heater - primoSchwank

- Radiant factor of 69.5%\*
- Available as single stage, 2-stage or fully modulating versions
- Patented Delta Mixing Chamber
- Combined high- and low-intensity radiation for high radiant factor
- Schwank ceramic "honeycomb effect" tiles [ceraSchwank]
- Uniform and comfortable heat distribution
- Short warm-up times
- Quality, long-life cycle and high comfort
- No dust swirls or draughts
- Quick and easy assembly
- Quality "Made in Germany"

\* Radiant factor of a primoSchwank 30 measured by DVGW laboratory according to DIN EN 419-2



		primoSchwank 10	primoSchwank 15	primoSchwank 20	primoSchwank 30	primoSchwank 40
Gas input* [kW]	Nat. gas H / L	9.7	14.5	19.4	29.1	38.8
	Propane	9.7	14.5	19.4	29.1	38.8
Gas consumption in m <sup>3</sup> /h **	Nat. gas H / L	0.97 / 1.13 m <sup>3</sup> /h	1.45 / 1.69 m <sup>3</sup> /h	1.95 / 2.26 m <sup>3</sup> /h	2.92 / 3.40 m <sup>3</sup> /h	3.90 / 4.53 m <sup>3</sup> /h
	Propane	0.76 kg/h	1.13 kg/h	1.52 kg/h	2.28 kg/h	3.01 kg/h
Weight [kg]	Appliance	10.0	14.0	17.5	23.0	30.1
	Control	1.4	1.4	1.4	1.4	2.3
Dimensions [mm]	Length L2	605	882	1160	1714	2269
	Length L1	553	830	1108	1662	2217
CE-Identification	CE-0085AU0374					

\* The nominal heat load is the heat quantity supplied by the gas based on its thermal value  $H_{in}$

\*\* Gas consumption: Nat. gas H:  $H_{in} = 9.97 \text{ kWh/m}^3$  Nat. gas L:  $H_{in} = 8.57 \text{ kWh/m}^3$  Propane:  $H_{in} = 12.87 \text{ kWh/kg}$  (at 0°C / 1013 mbar)

## Applications

High efficiency heater for industrial applications, warehouses or outdoor heating.

## Min. connection pressure

	1-stage	2-stage	modulating
Nat. gas H:	16 mbar	30 mbar	45 mbar
Nat. gas L:	22 mbar	24 mbar	45 mbar
Propane:	32 mbar	65 mbar	65 mbar
Butane:	50 mbar	65 mbar	65 mbar

## Max. connection pressure

Nat. gas/ Propane: 100 mbar

## Electrical supply

- Single-phase AC
- 230 V, N, PE
- 50 Hz [approx. 45 VA]

## Exhaust flue indirect

according to DIN EN 13410 or DVGW G 638-1 or ÖVGW G 3/3

## Gas connection

Threaded fitting R 1/2" [male]

## Fixture

The heater to be mounted on 4 points [A] with steel cables or the like on the ceiling or wall brackets attached to the wall.

## United Kingdom

**Schwank Ltd**  
Suite 21, 50 Churchill Square Business Centre, Kings Hill, West Malling, Kent ME19 4YU  
Tel.: +44 (0) 208 641 3900  
Fax: +44 (0) 208 641 2594  
E-mail: sales@schwank.co.uk  
Internet: www.schwank.co.uk

## Ireland

**Hevac**  
Muirfield Drive Naas Road, Dublin 12 Ireland  
Tel.: +353 1 419 1919  
Fax: +353 1 458 4806  
E-mail: info@hevac.ie  
Internet: www.hevac.ie

## Australia

**Devex Systems Pty Limited**  
5/83 Bassett St Mona Vale NSW 2103  
Tel.: +61 02 9997 2811  
Fax: +61 02 9997 7852  
E-mail: info@devexsystems.com.au  
Internet: www.devexsystems.com.au

## New Zealand

**Energy Products Int.**  
30 Gallagher Drive, Frankton, Hamilton  
Tel.: +64 7 839 2705  
Fax: +64 7 834 4212  
E-mail: sales@energy-products.co.nz  
Internet: www.energy-products.co.nz

