



PRV



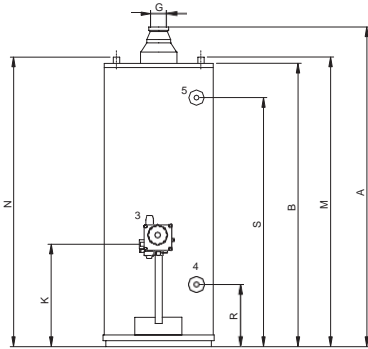
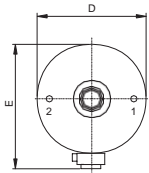
Residential conventional flue

PRV direct-fired water heaters are a cost effective solution for residential hot water demands. The units are equipped with a high efficient burner and baffle design that insures fast recovery times and economical hot water production. The range includes 3 models with storage capacities from 109 to 181 litres and heat inputs up to 18 kW.

- Multi port stainless steel burner
- Piezo igniter
- Control & ECO thermostats
- Thermal reflux safety flue system (TRS)
- Electrolytic protection - magnesium anode
- Draft diverter
- LPG conversion kit
- Suitable for vented (open) or unvented (sealed) systems

Optional accessories

- Unvented system kit
- Solenoid control kit
- Temperature & pressure relief valve



TECHNICAL DATA (NATURAL GAS G20)

Model		PRV 30 NORS	PRV 40 NORS	PRV 50 NRRS
Storage capacity	ltr	109	144	181
Heat input (u.v.)	kW	9.3	11.3	18.3
Heat output	kW	7.4	9.0	14.0
Gas consumption	m ³ /h	0.9	1.1	1.7
Recovery time, ΔT = 44 °C	min.	45	49	40
Draw off capacity 1st hour, ΔT = 28 °C	ltr	382	482	684
Draw off capacity 1st hour, ΔT = 44 °C	ltr	243	306	435
Draw off capacity 1st hour, ΔT = 50 °C	ltr	214	270	383
Draw off capacity continu, ΔT = 28 °C	ltr/h	227	276	430
Draw off capacity continu, ΔT = 44 °C	ltr/h	144	176	273
Draw off capacity continu, ΔT = 50 °C	ltr/h	127	154	241
Inlet pressure	mbar	20	20	20
Maximum working pressure	kPa(bar)	800(8)		
Anodes	no.	1	1	1
Weight empty	kg	47	52	75

DIMENSIONS & CONNECTIONS

A		1280	1370	1670
B		1120	1210	1540
D		465	515	515
F		545	595	605
G		80	80	100
K		325	325	380
M & N		1180	1270	1590
R		250	250	255
S		965	1030	1380
1	Cold water inlet	¾-14 NPT	¾-14 NPT	¾-14 NPT
2	Hot water outlet	¾-14 NPT	¾-14 NPT	¾-14 NPT
3	Gas control	Rp ½	Rp ½	Rp ½
4	Drain valve	¾-14 NPT	¾-14 NPT	¾-14 NPT
5	T&P valve	¾-14 NPT	¾-14 NPT	¾-14 NPT

ENERGY LABELING (ERP)

Load Profil		L	XL	XXL
Energy labeling		B	B	B
Efficiency	%	61	68	61

* Based on natural gas: G20, gross value

** Gas consumption at 15°C and a 1013.25 mbar

All measures are rounded off to 5mm.