



LEO AGRO

Heating and ventilation
for agricultural and harsh
environment buildings



**LEO
AGRO**

recommended for > chicken farms

Technical data

Air flow	3 700 m ³ /h
Heating capacity*	43,0 kW
Air stream range**	22,0 m
Power supply	230 V/50 Hz
Power consumption	415 W
Current consumption	1,8 A
IP	66
Insulation class	F
Connection	3/4"
Acoustic pressure level***	51 dB(A)
Max. water temperature	130°C
Max. pressure	1,6 MPa
Weight	21,8 kg
Weight with water	23,9 kg



Through long-time collaboration with farmers, growers and agricultural investors Flowair has developed LEO AGRO units, a series of fan heaters meeting the most important needs of the agricultural branch.

These units are designed to operate in harsh environment of aggressive vapours and polluted air.

* At max. air flow stream, inlet/outlet water temperature 90/70°C, inlet air temperature 0°C. Heating capacity tables are available on www.flowair.com.

** Horizontal range of isothermal stream (at velocity boundary equal to 0,5 m/s).

*** Acoustic pressure level measured in the room of average sound absorption, capacity 1500 m³, at distance of 5 m from the unit.



HP – multilayer protective exchanger coating
 SP – epoxidized exchanger

uncoated metal parts made of stainless steel

LEO
AGRO
SP **LEO**
AGRO
HP

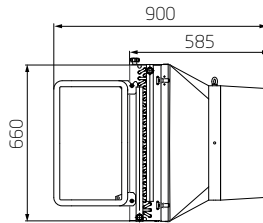
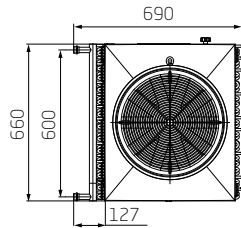


recommended for > AGRO HP – swine farms
 AGRO SP – hen houses,
 drying facilities

construction enables easy maintenance and cleaning

Casing made of ABS material

Long range air stream

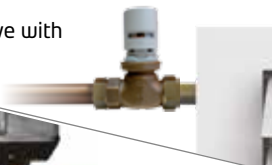


Technical data

Air flow	4 600 m ³ /h
Heating capacity*	56,2 kW
Air stream range**	28,0 m
Power supply	230 V/50 Hz
Power consumption	645 W
Current consumption	2,8 A
IP	66
Insulation class	F
Connection	3/4"
Acoustic pressure level***	62 dB(A)
Max. water temperature	95°C
Max. pressure	1,6 MPa
Weight	27,3 kg
Weight with water	31,0 kg

Control systems

SRV2d
 two-way valve with actuator



SRV3d
 three-way valve with actuator

R55
 IP 55 room thermostat



TRa
 5-step fan speed regulator





Features of LEO AGRO:

- High heating capacity
- Constant and steady distribution of heated air
- Thicker fins, coated exchanger, IP66 fan. Those durable components ensure reliability and failure-free operating
- 100% safe – heating sources (boilers) are installed outside the heated area
- Low weight, smart mounting brackets and rotary console simplify installation and maintenance.
- Cleaning doesn't require dismounting the unit or connections. Drain plug removes water or condensate from the casing. (except AGRO CR)
- May be cleaned with pressurized air or water
- Up to three times lower costs in relation to traditional heating systems

Examples of practical use



FLOWAIR SP.J.
81-571 Gdynia, ul. Chwaszczyńska 151E

tel. +48 58 627 57 22-24,
faks +48 58 627 57 21

e-mail: info@flowair.pl