

INDUSTRIAL RANGE

STEAM

GX

HIGH PRESSURE 3 PASS STEAM GENERATOR

Nominal pressure 12 bar or 15 bar



Standard equipment:

- steam accessory group contains:
 - steam intake valve for flow start
 - 2 spring safety valves
 - 2 level indicators with direct reflection
 - 2 shut-off valve groups and drain indicator
- monitoring instrumentation curve, containing:
 - large dial 3 way test valve manometer
 - limit pressure gage
 - manual reset safety pressure gage
- water delivery unit mounted on boiler support containing:
 - **1 vertical multistage centrifugal pumps suitable for 120°C water**
 - **1 shut-off valves, powered at flow start**
 - **1 pump suction filter**
 - **2 no return valves**
- purging unit containing:
 - purge shut-off valve at flow start
 - male connection quick exhaust valve with manual lever
- automatic conductivity probe level regulator containing:
 - pump startup probe
 - pump shut-off probe
 - 1° alarm and burner block probe for low level
 - 2° alarm and burner block probe for low level
- boiler electric command panel, IP 55 400V/3 +N/ 50Hz electrical protection, composed of:
 - main switch
 - pump/main switch (off-manual-automatic)
 - burner switch
 - pump 1 selector
 - level regulation relay
 - low level 1° alarm relay with manual reset
 - low level 2° alarm relay with manual reset
 - high pressure light and alarm reset button
 - low level 1° pressure light and alarm reset button
 - low level 2° pressure light and alarm reset button
 - alarm siren

Central components:

- ECXV vertical economizer
- VRC condensate collection vessel
- DEG atmospheric deaerator
- DEG/P pressurized atmospheric deaerator
- ADD power delivery water treatment unit
- BDV purge collection tank

Main features

The GX steam generator with three smoke ways is a monobloc unit with excellent performance and with original technical solutions, designed and constructed to give maximum

guarantee of reliability, durability, and management. The generator is horizontal, 3 smoke ways, passing flame, wetback semi-stationary type

Some of the product's main features are related below:

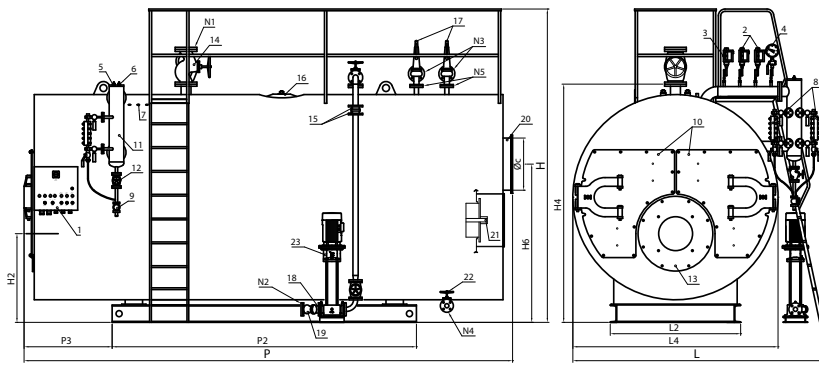
- P265GH UNI EN 10028/2 and P275NH UNI EN 10028/3 quality steel boiler body welded and tested with methods approved and labeled CE in accordance with the PED 97 /23/EC directive
- horizontal combustion chamber with single pass flame, with corrugated section for models beginning with GX2500
- wetback combustion produce reversal chamber, supported and connected to a socket of 500 mm diameter with manhole function
- Tube plates with drilled holes into which tubes are expanded and welded. The tube plates are completely dished after heating and butt welded thus avoiding t-butt welds
- the shell with flanged PN 16 or PN 40 EN 1092-1 connections for equipment operation; equipped with manhole and hand holes, and lifting eye bolts.
- P235GH UNI EN 10216/2 smoke tubes welded to tube plates, without Turbolators
- front smoke box made from steel sheet, thermally insulated with refractory materials with a high aluminum content, equipped with two flat separated doors, lined in ceramic fiber and rotating on a double-jointed hinges; complete with refractory cone to suit burner
- rear smoke box made from steel sheet, thermally insulated with refractory materials with a high aluminum content equipped with two flat separated doors, equipped with cleaning hatch, chimney connection, buffer for access to the combustion chamber, light flame with guillotine closing
- support built form carbon steel sections able to support the entire unit.
- embossed metal sheet upper walkway for accessories service, parts located above the boiler
- high density, mineral wool mattress, adequate thickness thermal insulation, with round embossed aluminum case.
- suitability for liquid or gaseous fuels, for a steam production from 1700 to 20000 kg/h
- Supplied accessories needed for automatic operation with mechanical and hydraulic assembly for all equipment and certifications, also in compliance with the PED 97 /23/ EC Directive
- Electrical wiring converging to a single centralized control panel, having silicone insulated wires inserted in PVC protective sheaths all subjected to final functionality test

Available accessories	Code
Series SIXEN and GX generators automatic purge system	See accessories section
salinity control unit (TDS pneumatic)	17090037
salinity control unit (TDS electrical)	17090035
salinity control unit (TDS electrical light)	17090051
Sample cooler	38040100
backup delivery pump	
modulating level regulatory system	See accessories section
High level security kit	90060010
Auto diagnostic high level security kit	90060040
Auto diagnostic low level security kit	90060050
GSS72/2 global security system	86900068
Ladder and handrail	90060060
2° stage regulating pressure gage	16030010

For each product always indicate the code at the time of the order.

For higher or lower pressures see our commercial department.

GX model with superheater available upon request



- Legend:**
 N1 Steam press connection
 N2 Power delivery connection
 N3 Safety valve drain connection
 N4 Boiler drain connection
 N5 Safety valve connections

Characteristics	Model 12 bar		Model 15 bar		Effective capacity ***	Flow Thermal	100% efficiency (ref. C.O.P.)	Steam production*	Volume level H ₂ O	Total volume H ₂ O	Fumes pressure drop	Fuel consumption			Total weight**
	Code	min-max work pressure bar	Code	min-max work pressure bar								Gas	Diesel fuel	Nafta	
Model					kW	kW	%	kg/h	lt	lt	mbar	Nm ³ /h	kg/h	kg/h	kg
GX 1000	86161000	8-11,5	86171000	12-14	1163	1292	90,00	1700	4565	5940	5,5	133,7	110,1	115,8	6500
GX 1200	86161200	8-11,5	86171200	12-14	1395	1550	90,00	2050	4565	5840	7	160,5	132,2	139	7100
GX 1500	86161500	8-11,5	86171500	12-14	1744	1937	90,00	2560	5475	6960	7	200,6	165,2	173,7	8500
GX 1750	86161750	8-11,5	86171750	12-14	2035	2261	90,00	3000	5475	6860	7	234	192,7	202,7	9600
GX 2000	86162000	8-11,5	86172000	12-14	2326	2584	90,00	3410	6615	8435	8,5	267,5	220,3	231,6	10500
GX 2500	86162500	8-11,5	86172500	12-14	2907	3230	90,00	4260	7640	9610	8	334,3	275,3	289,5	11500
GX 3000	86163000	8-11,5	86173000	12-14	3488	3875	90,00	5100	7955	9865	9	401,2	330,4	347,4	13100
GX 3500	86163500	8-11,5	86173500	12-14	4070	4522	90,00	6000	9725	11940	10,5	468,1	385,5	405,4	14300
GX 4000	86164000	8-11,5	86174000	12-14	4651	5167	90,00	6800	10470	12670	10	535	440,6	463,3	16000
GX 5000	86165000	8-11,5	86175000	12-14	5814	6460	90,00	8520	11200	13750	10,5	668,7	550,7	579,1	18000
GX 6000	86166000	8-11,5	86176000	12-14	6977	7752	90,00	10240	13545	16530	12	798	657,2	691	21000
GX 7000	86167000	8-11,5	86177000	12-14	8140	9044	90,00	12000	15970	20030	12	925,8	762,5	801,8	24000
GX 8000	86168000	8-11,5	86178000	12-14	9302	10335	90,00	13600	19320	24680	14	1035,1	852,5	896,4	29000
GX 9000	86169000	8-11,5	86179000	12-14	10465	11627	90,00	15300	22060	28140	14	1190,5	980,4	1030,9	30000
GX 10000	86169900	8-11,5	86179900	12-14	11628	12920	90,00	17000	24620	31115	15	1322,7	1089,3	1145,5	36000
GX 12000	86169912	8-11,5	86179912	12-14	13953	15503	90,00	20000	29250	37500	19	1586,9	1306,9	1374,2	38000
GX 13000	86169913	8-11,5	86179913	12-14	15116	16795	90,00	22000	31240	40100	20	1719,6	1416,1	1489,1	40000
GX 15000	86169915	8-11,5	86179915	12-14	17442	19380	90,00	25000	36000	46300	25	1984,1	1634,0	1718,2	42500

Dimensions	H	H2	H4	H6	L	L2	L4	P	P2	P3	Øc	N1	N2	N1/N2	N3	N4	N5
Model	mm	mm	mm	mm	mm	mm	mm	mm	mm	mm	mm	DN/in	DN/in	PN	DN/in	DN/in	DN/in
GX 1000	3200	865	2280	1500	2450	1200	2000	4100	2400	750	400	65	32	16	40	40	25
GX 1200	3200	865	2280	1500	2450	1200	2000	4100	2400	750	400	65	32	16	40	40	25
GX 1500	3300	915	2460	1620	2550	1400	2180	4100	2500	750	450	80	32	16	50	40	32
GX 1750	3350	915	2460	1620	2650	1400	2180	4100	2500	750	450	80	32	16	50	40	32
GX 2000	3350	915	2460	1620	2650	1400	2180	4600	3000	750	500	80	32	16	50	40	32
GX 2500	3500	990	2620	1745	2760	1500	2300	4900	3200	800	550	100	32	16	50	40	32
GX 3000	3600	1030	2690	1830	2900	1500	2340	5100	3200	880	600	100	32	16	50	40	32
GX 3500	3600	1020	2720	1750	2900	1500	2400	5600	3500	1025	600	125	32	16	50	40	32
GX 4000	3780	1115	2920	1950	3000	1600	2500	5700	3700	1070	650	125	40	16	65	40	40
GX 5000	3954	1150	3020	2020	3260	1600	2640	5700	3500	1100	650	125	40	16	65	40	40
GX 6000	4110	1250	3200	2050	3390	1700	2740	6300	4000	1100	700	150	50	16	80	40	50
GX 7000	4250	1300	3350	2070	3460	1800	2880	6750	4500	1100	700	150	50	16	80	40	50
GX 8000	4400	1345	3500	2150	3620	1900	3040	7250	5000	1100	800	150	50	40	100	40	65
GX 9000	4550	1320	3600	2200	3750	2000	3200	7650	5100	1200	900	200	50	16	100	40	65
GX 10000	4550	1400	3685	2350	3750	1900	3280	8050	5500	1200	900	200	50	40	100	40	65
GX 12000	4650	1400	3770	2240	4000	2300	3350	8700	6000	1150	1100	200	65	16	100	40	65
GX 13000	4870	1470	3970	2240	4500	2300	3500	9030	6200	1160	1100	200	65	16	100	40	65
GX 15000	4870	1750	3970	2500	4500	2300	3500	9300	6500	1200	1100	250	65	16	100	40	65

Data regarding Nominal pressure 12 bar - * Production with delivery 80 °C water. - **The weight refers to 12 bar boilers.
 *** Ratings related to methane gas; for diesel or naphtha operation the norm can provide a downgrading.
 For more information contact our commercial department.