

GREENOx BT COND

WITH CONDENSER

Nominal pressure 5bar



Main features

The GREENOx BT COND is a three pass wet back boiler with condenser manufactured with high quality steel to be fitted with burners with gaseous fuel operation.

Some of the product's main features are related below:

- carbon steel boiler body.
- large volume combustion chamber for single pass flame for low heat release, three pass, wet back horizontal combustion chamber and supported by a completely submerged nozzle.
- laser cut tube plate holes.
- EN10217-2 P235GH smoke ducts welded to tube plates, fitted with special helical turbulators.
- Third smoke pass made possible by double layer, tube in tube differential contact, with anti-condensation feature.
- BAX condensing coil installed at the rear of the boiler, forming a single body consisting in:
 - AISI 316 Ti anti acid stainless steel, consisting in Stainless steel Plates with a particular creased conformation in order to increase heat exchange surface area and facilitate condensate droplet formation, allowing proper drainage.
 - Condensate collecting tray with inspection and cleaning door and lower part drainage.
- boiler hydraulic connections
- boiler casing with flow and return flanged connections, working device connections, inspection doors, all manufactured with approved welding procedures.
- embossed aluminum, round case cladding, high density glass wool, thick mattress insulation.
- flat front door with reversible opening, inner high-insulating ceramic casing, pivoting on hinges, easily opened by perforated rings equipped with levers as to guarantee a perfect combustion gas seal and easy service.
- Flat rear door, manufactured in high quality steel as to guarantee high heat resistance, constructed in one piece that can be easily opened and that allows gas duct inspections, fastened with bolts, equipped with chimney connection and cleaning door.

Standard equipment:

- Complete insulating casing
- Turbulators
- Cleaning brush

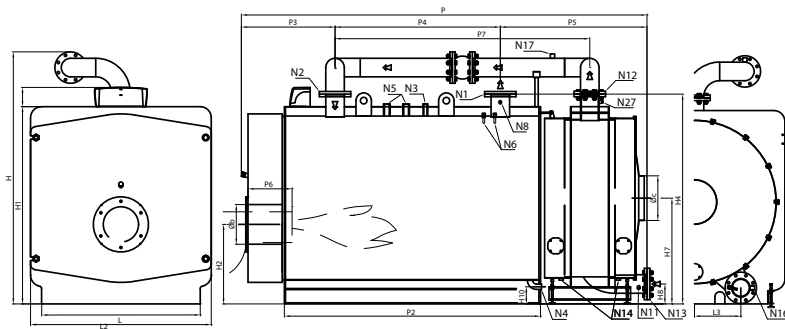
Accessories	Code
Acid condensate Neutralizer system	
Neutralizer	81020001
Neutralizer with pump	81020002
Control panels	
Thermostatic control panel	QACCBT01ELMCE
<i>Features can be seen in "Thermostatic control panels section"</i>	
Boiler management ϕ eterm [™] control panel	QETERM01CE
Boiler management ϕ eterm [™] control panel	QETERM01RU2*
System management layouts	QETERM02

For characteristics and other accessories see " ϕ eterm[™] system" section

* This code refers to markets of: Russia, Belarus, Ukraine, Georgia and Kazakhstan

Maximum operating pressure 5bar.

COMMERCIAL RANGE CONDENSING BOILERS GREENOx BT COND



- Legend:**
- N1 Boiler flow
 - N2 Boiler return
 - N3 Equipment connections
 - N4 System load/drain connection
 - N5 Safety valve connection
 - N6 Bulb sheath
 - N8 Control cover
 - N11 Return temperature control
 - N12 Condenser flow
 - N13 Condenser return
 - N14 Condenser condensate drains
 - N16 Condensator drain
 - N17 Vent connection
 - N27 Delivery temperature control

Characteristics	Code product	Effective capacity			Flow Thermal kW	100% efficiency (ref. C.O.P.)		Efficiency 30% Temp. Flow/Return 50°/30°C kW	Pressure drop combustion gas mbar	Pressure drop Hydraulic (ΔT=12°C) mbar	Volume H ₂ O lt	Weight total kg
		Temp. Medium 70°C kW	Temp. Flow/Return 50°/30°C kW	Temp. Medium 70°C %		Temp. Flow/Return 50°/30°C %						
Model												
GREENOx BT COND 180	83081850	1646	1800	1.674	98,3	107,5	109	8,0	53,0	2966	5560	
GREENOx BT COND 200	83082050	1829	2000	1860	98,3	107,5	109	9,5	65,0	2966	5560	
GREENOx BT COND 230	83082350	2103	2300	2140	98,3	107,5	109	10,0	86,0	2966	5560	
GREENOx BT COND 260	83082650	2377	2600	2419,0	98,3	107,5	109	14,0	35,0	3380	5835	
GREENOx BT COND 300	83083050	2743	3000	2791,0	98,3	107,5	109	15,0	46,0	3380	5835	

Dimensions	H	H1	H2	H4	H7	H8	H10	L	L2	P	P2	P3	P4	P5	P6	P7	Øb	Øc	N1	N2	N1/N2	N3	N4	N5	N6	N8	N11	N12	N13	N14	N16	N17	N27
	mm	mm	mm	mm	mm	mm	mm	mm	mm	mm	mm	mm	mm	mm	mm	mm	mm	mm	DN/in	DN/in	PN	DN/in	DN/in	DN/in	DN/in	DN/in	DN/in	DN/in	DN/in	DN/in	DN/in	DN/in	
GREENOx BT COND 180	2288	1790	722	1904	960	180	155	1640	1440	4180	2824	850	2000	1330	360-410	2813	360	400	150	150	16	1"	1"1/4	1"1/2	1/2"	1/2"	1/2"	150	150	1"	1"	1"	1/2"
GREENOx BT COND 200	2288	1790	722	1904	960	180	155	1640	1440	4180	2824	850	2000	1330	360-410	2813	360	400	150	150	16	1"	1"1/4	1"1/2	1/2"	1/2"	1/2"	150	150	1"	1"	1"	1/2"
GREENOx BT COND 230	2288	1790	722	1904	960	180	155	1640	1440	4180	2824	850	2000	1330	360-410	2813	360	400	150	150	16	1"	1"1/4	1"1/2	1/2"	1/2"	1/2"	150	150	1"	1"	1"	1/2"
GREENOx BT COND 260	2394	1790	722	1904	960	206	155	1640	1440	4680	3324	880	2500	1300	360-410	3282	360	400	200	200	16	1"1/2	1"1/4	2"	1/2"	1/2"	200	200	1"	1"	1"	1/2"	
GREENOx BT COND 300	2394	1790	722	1904	960	206	155	1640	1440	4680	3324	880	2500	1300	360-410	3282	360	400	200	200	16	1"1/2	1"1/4	2"	1/2"	1/2"	200	200	1"	1"	1"	1/2"	

For each product always indicate the code at the time of the order.
The control panel is sold separately